

TRU-ALIGN[®]

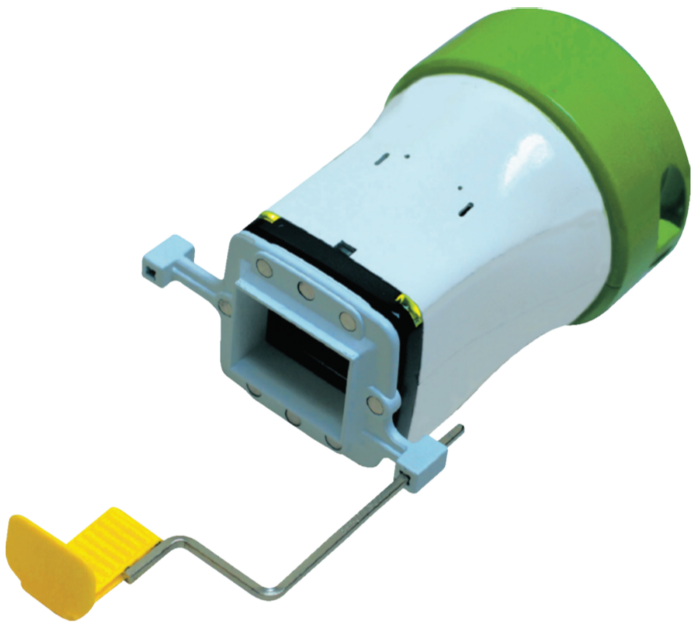
LASER-ALIGNING X-RAY POSITIONING SYSTEM

Protects patients from unnecessary exposure to ionizing radiation while improving the diagnostic information on the X-ray image

Reducing scatter radiation is **safer** for your patients

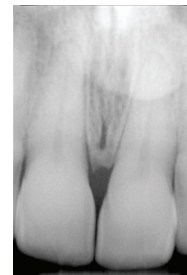
Focusing radiation means **better** diagnostic images

Positioning and aligning **faster** minimizes retakes



Tru-Align incorporates rectangular collimation, which greatly reduces scatter radiation, resulting in clearer, crisper images and greatly improved image resolution.

Adding Tru-Align to your existing X-ray head results in a 60-70% reduction in radiation exposure to your patients.



Through beam collimation, scatter radiation is reduced so X-ray images are clearer and crisper.

Compliance & Safety Solutions

Radiation
Minimization



Brought to you by

HealthFirst[®]

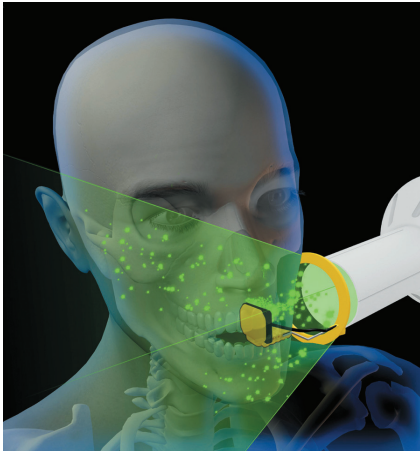
for your practice, your patients, your planet.

To order visit HealthFirst.com or call 800 331 1984

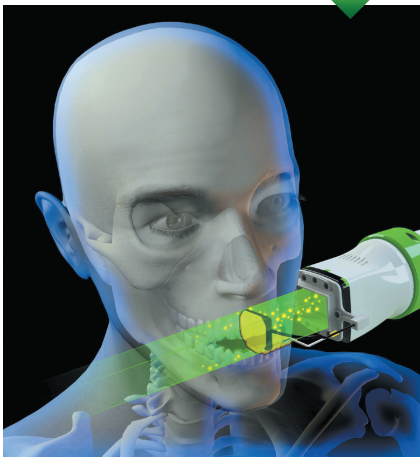
TRU-ALIGN®

LASER-ALIGNING X-RAY POSITIONING SYSTEM

Protects patients from unnecessary exposure to ionizing radiation while improving the diagnostic information on the X-ray image



Patented Trillion technology shapes and controls the size of the X-ray photon beam to the size of the receptor.



SAFER

With traditional round-cone X-ray, radiation exits in a spreading pattern. As **Tru-Align** focuses the X-ray beam on the receptor and eliminates cone-cuts, there is a 60-70% reduction in radiation for the patient.

BETTER

The most remarkable benefit of **Tru-Align** is the improved diagnostic quality of the X-ray image. With traditional round-cone X-ray, only 10% of the beam hits the receptor. Photons are scattered into the patient's tissues or reflected back onto the receptor as *noise* or *fog*, compromising the image resolution and diminishing the diagnostic quality.

With **Tru-Align**, the beam is only 2% larger than the receptor. There is almost no scatter effect (noise) resulting in clearer, crisper images with greatly improved image resolution.

FASTER

Tru-Align easily attaches to any round cone with a diameter of 2.25 to 3 inches. Simply slide the Tru-Align on and latch. It installs in seconds.

The internal LED laser ensures perfect alignment and minimizes retakes. When the laser and ring reflector are aligned perfectly, the ring magnetically connects, with visual (green lights on the front edge) and audible confirmation ensuring a perfect image everytime.

Tru-Align uses the most common film/sensor holders by RINN and FLOW. There's no change in technique with **Tru-Align**.

Order Online

Go to HealthFirst.com to determine the Tru Align model to fit your X-ray

Cone Diameter	Tru-Align Size	P/N
2.25"-2.75"	Small	3412
2.75"-3"	Large	3410

Additional Tru-Align Alignment Rings (3-pack) 3411

What the President of the American Academy of Oral and Maxillofacial Radiology said about Tru-Align Positioning System...

First, scientific evidence supports the high importance of optimal collimation in dose reduction to the patient.

Second, rectangular collimation for intraoral radiography also reduces scattering of the primary beam and therefore will theoretically improve image quality.

Third, your device can help with accurate positioning of digital sensors that are sometimes perceived to be more difficult to position than radiographic film. Hence, the Tru-Align Positioning System undoubtedly should assist in transition from film to digital imaging.

Fourth, the device should reduce the number of remade radiographs saving patient dose and costly waste of dental personnel and patient time. Remakes also reduce the confidence of patients in the quality of that dental practice. Remake avoidance can have beneficial psychological advantages.

Fifth, as your device has audible feedback, it is possible for the first time to know whether the patient has inadvertently affected beam geometry in an untoward manner when the operator has moved to a shielded space to make the exposure.

Use of rectangular collimator is fully endorsed by the American Academy of Oral and Maxillofacial Radiology and also by the latest guidelines on Dental Radiography from the National Council on Radiation Protection.

Allan G. Farman

BDS, PhD, DSc, MBA, Diplomate, American Board of Oral and Maxillofacial Radiology, Professor of Radiology and Imaging Science, The University of Louisville School of Dentistry

Manufactured by Interactive Diagnostic Imaging, LLC

Distributed by HealthFirst 22316 70th Avenue West, Unit A, Mountlake Terrace, WA 98043



To learn more about Radiation Minimization Products, please visit HealthFirst.com or call 800 331 1984